

designNJ

NEW JERSEY'S HOME & DESIGN MAGAZINE

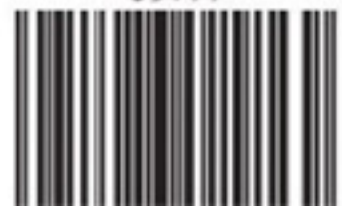
August/September 2023

INSPIRED BATHROOMS

MULTICULTURAL DESIGN IN MONMOUTH
ADDING PERSONALITY IN CHATHAM
BACKYARD BLISS IN UPPER SADDLE RIVER

\$5.99

09>



International Intrigue

A Monmouth County home has multicultural flair

INTERVIEW BY MARIROSE KRALL

PHOTOS BY MARCO RICCA

ARCHITECTURAL AND INTERIOR DESIGN BY

WILLIAM MCINTOSH DESIGN

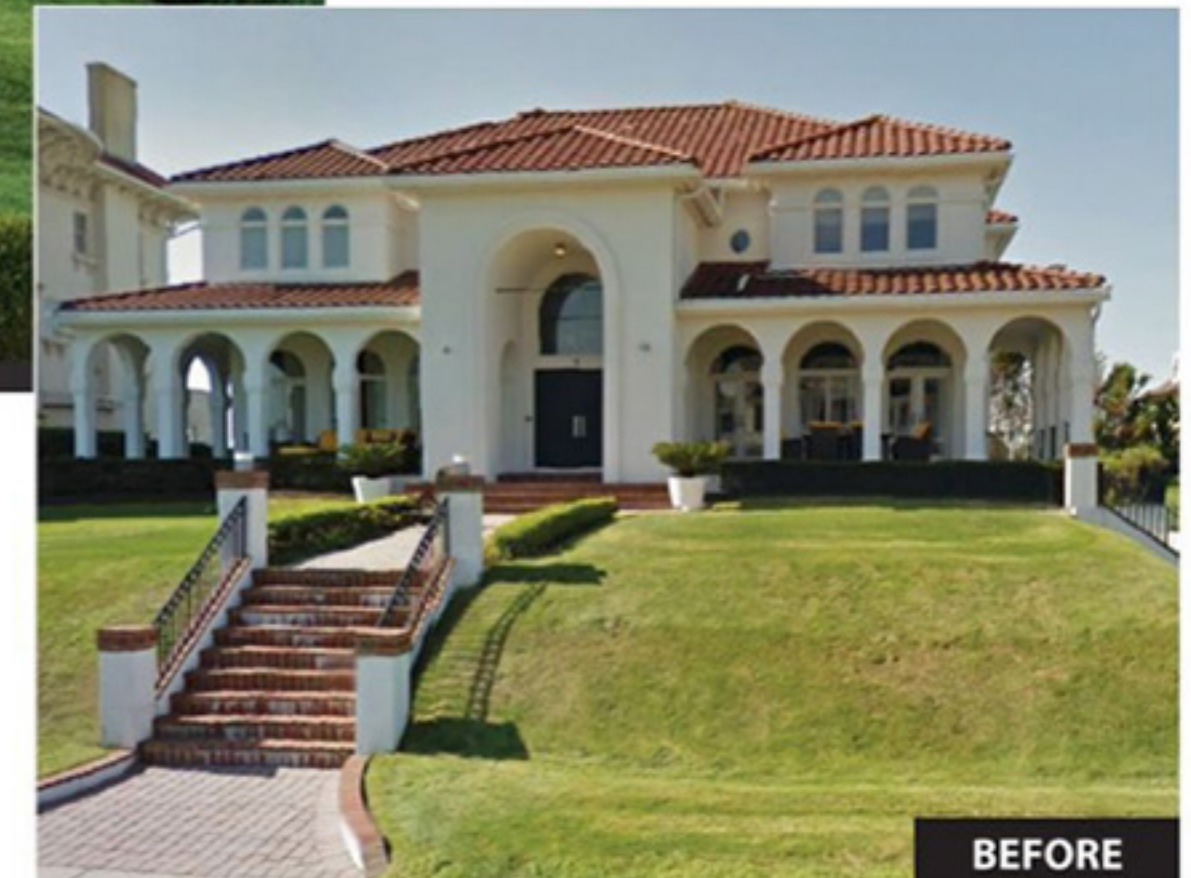
ARCHITECT OF RECORD ROBERT ADLER



WILLIAM MCINTOSH
President

MARTIN RAFFONE
Partner & Creative Director

William McIntosh Design
212-807-8030 | WilliamMcIntoshDesign.com



BEFORE

It was a 'tear-it-down-to-the-bones' kind of project," says William McIntosh, principal of Manhattan-based William McIntosh Design. He and partner and creative director Martin Raffone, a color and materials specialist and stylist, created a sophisticated aesthetic, inside and out, that was inspired by extensive world travels — both his and the clients'.

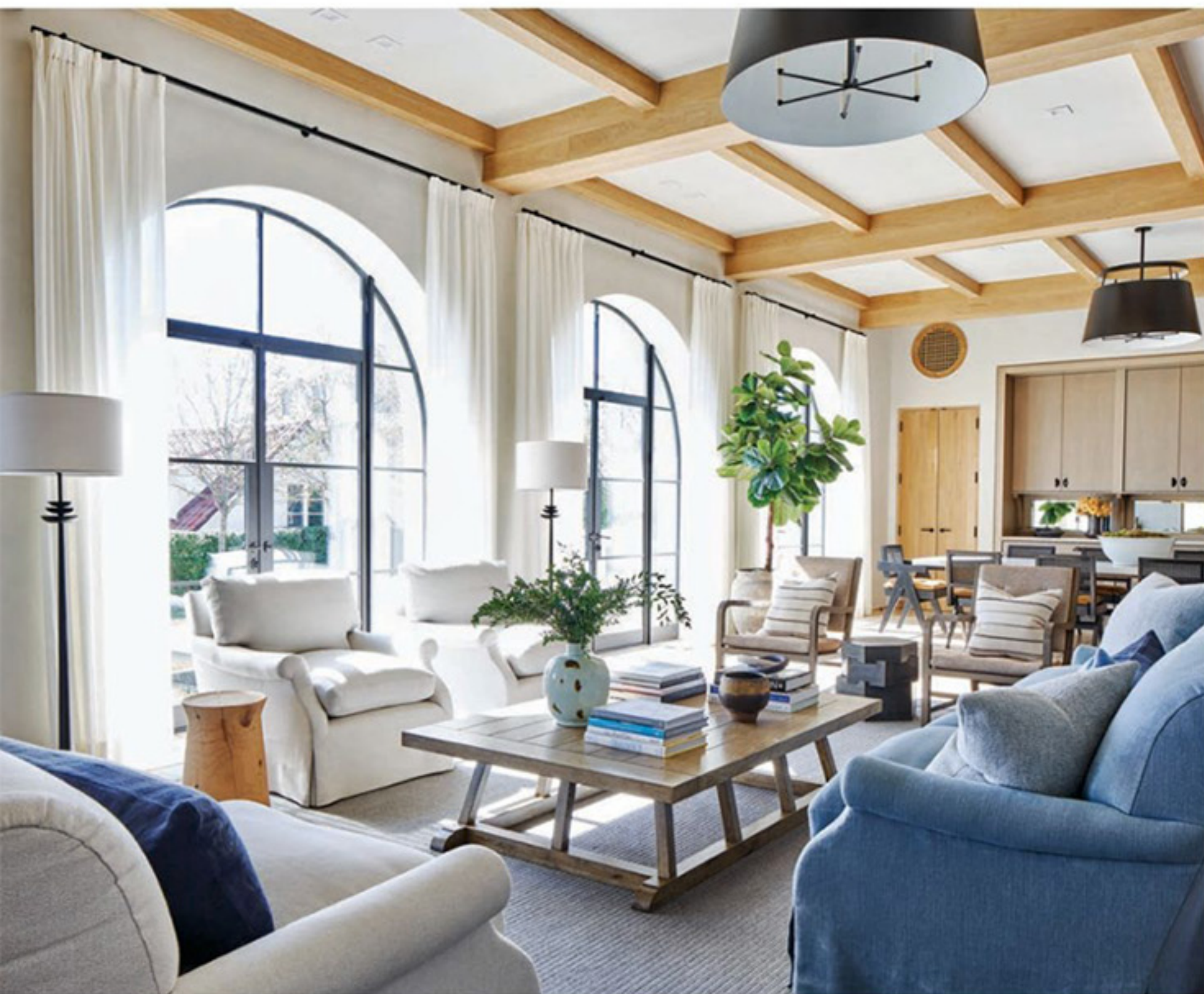
DESIGN NEW JERSEY: *You call the style of this house Italian Renaissance Revival. What elements of that style can be seen here?*

WILLIAM MCINTOSH: The most prominent design element is the arcade across the front façade at the porch level, which involves a series of simplified columns. The bracketed eave line is also very much an Italianate detail, as is the stucco exterior. The hip roof covered in clay

"The architect of record, Robert Adler, is a great guy," says designer William McIntosh, who handled architectural and interior design for this project. "He's local to the area and he was invaluable as far as the structural heavy lifting and the permits process. He's a great collaborator."

Arched glass doorways in the living room lead to the rear yard, pool and terrace.

The homeowners requested a banquette in the lounge where they could sit for food and cocktails. "Everybody loves a banquette," McIntosh says. "That's what this room is about, everyone gathering."



As far as the actual plantings, we chose items to complement the look of the house. We selected the evergreens on either side of the front entrance because they are similar to Italian Cyprus trees, which would not do well in the Northeast United States.

DNJ: How did you alter the interior layout within the original footprint?

WM: Essentially, we rebuilt the entire house. We were required to maintain the massing of the structure, but we took the house down to the studs and completely reconfigured the interior. We raised the

ceiling height on the first floor by 30 inches and raised the roof 30 inches. We lined up the main living spaces—living room, dining room and lounge—along the rear of the house. The kitchen was relocated from the rear to the front and is now adjacent to a dining terrace where the clients enjoy having breakfast outdoors. The center entry foyer was redesigned as a two-story space with the staircase winding behind the walls around three sides to the second-floor hallway. The steel-and-glass windows in the stairwell and landings look down to the entry.

DNJ: What was the inspiration for the ceiling treatments found throughout the first floor?

WM: If you were in any great old house in the countryside of France or Italy, you'd see exposed beams on the ceiling. It's the structure of the house that you're seeing, and it gives the house character. It adds a nice warmth and a material element to the spaces as well, as opposed to a Sheetrock ceiling.

DNJ: How do the additional wood accents, which figure prominently throughout the interiors, reinforce the multicultural aesthetic?

WM: The white oak elements are a nod to components found in the architecture in various countries. The dining room, for instance, is punctuated with decorative elements that not only reiterate the look of the wood beams found on the ceiling but also have significance on their own. The return air vents near the ceiling are reminiscent of a Roman grille or Moroccan Mashrabiya turned-wood lattices.

DNJ: What is the interior aesthetic?

WM: The interiors are an amalgam of many influences drawn from

Backyard Escape

AN AT-HOME GETAWAY WITH ALL THE MAKINGS OF A FIVE-STAR RESORT

WRITTEN BY MEG FOX | PHOTOS BY MARCO RICCA
DESIGN/BUILD LANDSCAPE BY CLC LANDSCAPE DESIGN
PAVILION DESIGN & CONSTRUCTION BY
S SCOTT CONSTRUCTION AND DESIGN
FURNITURE SELECTION, LAYOUT & FINISHES BY
JENNIFER PACCA, ALLIED MEMBER ASID



The heated pavilion boasts a stone woodburning fireplace, knotted-pine-covered ceiling and chic all-weather furnishings and accents that rival indoor-quality comfort and style. Colors derived from the stone — in a combination of earthy gray and warm golden hues — inspired the room's color palette, designer Jennifer Pacca says. Textured woven chairs and a stone cocktail table "balance the heavily textured stone of the fireplace," she adds.

Upon completing all the interior spaces of their Upper Saddle River home with help from Jennifer Pacca Interiors in Wyckoff, homeowners Vida Mylson and Eric Weiner decided to "continue the vibe on their patio," Pacca says.

"The outdoor project started when the family of four decided they needed an alternative to traveling vacations or to enjoy a resort experience any day of the week," says Pacca, a state-certified interior designer and

allied member of the American Society of Interior Designers. "Whether it be a place to relax, eat, hang with friends, watch sports on TV or even take a work Zoom call, the design needed to be multifunctional and to look and feel like an outdoor haven."

Pacca collaborated with design/build firm CLC Landscape Design and a team of professionals to create the outdoor retreat, encompassing designated areas for cooking, dining, entertaining or relaxing in durable, stylish

settings that weather the elements. The outdoor kitchen — equipped with such features as a large grill, sink, refrigerator and granite-topped island — "perfectly suits the owners' entertaining needs," Pacca says. A built-in, stone-encased pizza oven area completes the gourmet kitchen experience.

"My husband, Eric, loved the idea of making pizza and having kids join in on the fun," Mylson says. While his first year of making pizza "was humbling, for sure ... he's very excited for year two!"

The same stone used to construct the pizza oven reappears in the covered pavilion's woodburning fireplace. "This helps unify the spaces and pull the color palette through the entire outdoor area," Pacca explains. The pavilion is a great place to curl up by the fire or catch a game on television, and it's heated so the owners can use it late into fall, she says. A separate seating area sheltered by a large umbrella doubles as an ideal gathering spot for the entire family or as a quiet place to work from home.



Entertaining needs are met with a sizable island where the homeowners can cook, prep and mingle in the outdoor kitchen, Pacca says. The granite countertop and stainless-steel cabinets are “super durable to weather the elements.” A large outdoor grill, sink, refrigerator and pizza oven — flanked by additional stone surfaces for pizza prep — round out the gourmet kitchen vibe.

The client’s love of neutral colors influenced the design scheme’s black, white and tan palette. “It’s an ultra-sophisticated counterpoint” to all the greenery of the landscaping and raw materials of the outdoor kitchen, Pacca says. The organic, architectural shapes of the furniture help define each space, coupled with resilient stone cocktail tables and chunky woven lounge chairs that add texture. Teak “adds just the right amount of warmth to the black-and-white scheme,” Pacca says.

All the attention to detail translates to happy clients. “We designed our backyard to not only expand our living space and create a relaxing and beautiful environment to entertain friends and family, but also to bring the feeling of being away to our home,” Mylson says. “During the spring and summer, we spend most of our nights outside using the pizza oven, the barbecue and especially the living room in the pavilion to watch movies and shows together as a family.”

SOURCES Overall: design/build landscape (design of backyard, kitchen, pizza oven, pavilion and landscaping), CLC Landscape Design in Ringwood; furniture, layout and selection of finishes, Jennifer Pacca Interiors in Wyckoff; electrical work, Austin Integration LLC in Hewitt; plumbing, Vance Plumbing & Heating in Hawthorne; potted plants, Waterford Gardens in Saddle River; sprinkler system, Morris & Bergen Irrigation in Wayne. **Pavilion:** design and construction, S Scott Construction and Design in Franklin Lakes; sectional, “Wailea” swivel chairs and “Tambora” cocktail table, Bernhardt; accent tables, Palecek; area rug, Kravet; pillows: black pattern from Schumacher, animal print from Fabricut, stripe pattern from Kravet. **Outdoor Kitchen:** final kitchen design, cabinets, countertops, pizza oven, refrigeration and other appliances, Eastern Outdoor Furnishings in Totowa; cabinets, Danver; stools, Summer Classics. **Dining Area:** “Clip” dining table, Seasonal Living; “Santa Cruz” outdoor arm chairs, Bernhardt; umbrella, Frontgate. **Open Seating Area:** “Mulia” sofa, “Mara” chairs, “Tambora” cocktail table and other accent table, Bernhardt; end tables, RH; wicker stools, Palecek; area rug, Kravet.

For contact information, page 64



“We envisioned a piece very sculptural and solid to define and anchor the dining space,” Pacca says of the 10-foot-long dining table with a light gray concrete top and teak base. “The woven fabric of the chairs is a beautiful juxtaposition to the hard concrete.”



Sheltered by a large umbrella, this multifunctional seating area is an ideal spot to work from home or gather with family. The comfy, visually pleasing setting beckons the homeowners to come out of the house and savor moments outdoors.

WRITTEN BY REN MILLER
PHOTOS BY MARCO RICCA
DESIGN BY ELIZABETH GUEST

The scenic wallpaper seemingly continues to the woodland visible through the windows



Just like the greening of trees signals rebirth each spring, so does the mural wallpaper in this primary bathroom represent a new beginning for a home in Mountainside. The wallpaper captures forest scenes that echo the woodlands visible through the windows of the home, which interior designer Elizabeth Guest's parents built in the 1970s.

Guest grew up in the home and returned frequently for visits after moving to Hunterdon County to raise her family and launch her business,

Elizabeth Guest Interiors LLC. Her mother loved the home and, over the years, encouraged Guest to think about moving back someday. But the home had so much of her mother's tastes and spirit that Guest couldn't envision living there again.

That changed a few years ago when her mother passed away after a brief illness around the same time that Guest began to think her own now-empty nest was too large for just one person. With the encouragement of her family, she looked at her mother's house through a new lens and

Woodland Chic

WALLPAPER WITH FOREST SCENES INSPIRES
A MOUNTAINSIDE BATHROOM

Old and new mingle harmoniously in the antique Dutch marquetry dressing table and the modern mirrored chest.



decided she could, indeed, honor its heritage while making it her own.

A two-year, top-to-bottom redesign included a reassignment of space on the second floor. Her mother's bedroom became a spacious primary bathroom with an expanded closet, spaces for a shower and a water closet on one wall, and a bathtub between two windows on the opposite wall. Wrapping it all is the "Arcadia" mural wallpaper from Iksel Decorative Arts, an international brand with offices in Istanbul and London and available in the United States through Schumacher.

"I've always wanted to use Iksel wallpaper," Guest says. "This bathroom was the perfect place for it because the room looks out onto woodland that is part of the New Jersey Green Acres Program. When you walk into the bathroom, it looks like the trees in the wallpaper keep going to the outside."

The wallpaper was not without challenges. Guest spent an entire Saturday measuring the room, not only the height and width of each wall, but also the doors, windows and space between the windows down to the quarter inch. She sent the elevations to Iksel in Turkey, and the company's experts planned the layout. The wallpaper series that Guest chose has 36 panels and, because it's a continuous scene, she couldn't randomly pick certain panels. She knew she wanted a panel that pictures a pond to be placed directly behind the bathtub, and the rest of the panels flow from there. "It worked out really well because parts of the scene that were mostly just brown hills and roads fell behind a mirror or over a window and were cut out."

The designer framed the wallpaper with crown, base and window molding painted deep green. She originally considered a white tile floor

but then decided to refinish the existing wood floor and strategically placed rugs to protect it from water. To brighten the room, she chose a white oval tub and white vanity with a large mirror flanked by silvery sconces with white shades. On the opposite side of the room is an antique Dutch marquetry dressing table, a bench and a mirror, all of which Guest acquired years ago while working at Sotheby's. She also added a mirrored chest that sits against the water closet wall, creating a subtle shimmer while reflecting the wallpaper. Above the chest is a custom stained-glass window that channels daylight from the water closet to the rest of the room.

Guest credits Richard Barr of Plumberry Designs for helping with the details of the cabinetry and the logistics of the room's layout.

The finishing touch — literally the last thing she added to the room — is a mirror with an antiqued gold finish that hangs sun-like over the bathtub. "It was the perfect punctuation point for this room," Guest says. ■

SOURCES design, Elizabeth Guest Interiors in Mountainside; wallpaper, Iksel through Schumacher; dressing table with bench and mirror, antiques; mirrored chest, Made Goods; stained glass window, designed by Elizabeth Guest and Studio J in Paterson and made by Studio J; vanity, Tedd Wood Fine Cabinetry through Plumberry Designs Inc. in Florham Park; vanity top, Stone Surfaces Inc. in East Rutherford; tub, Porcelanosa in Paramus; plumbing fixtures, House of Rohl through General Plumbing Supply in West Orange; mirror over vanity, Mirror Home; sconces, Alexa Hampton for Visual Comfort & Co. with the designer's shades; sink, Kohler; mirror behind tub, Worlds Away; ceiling light, Hudson Valley Lighting; woven rug, Annie Selke; molding color, "Newburg Green" by Benjamin Moore & Co.; window shades, Hartmann & Forbes.

For contact information, page 64